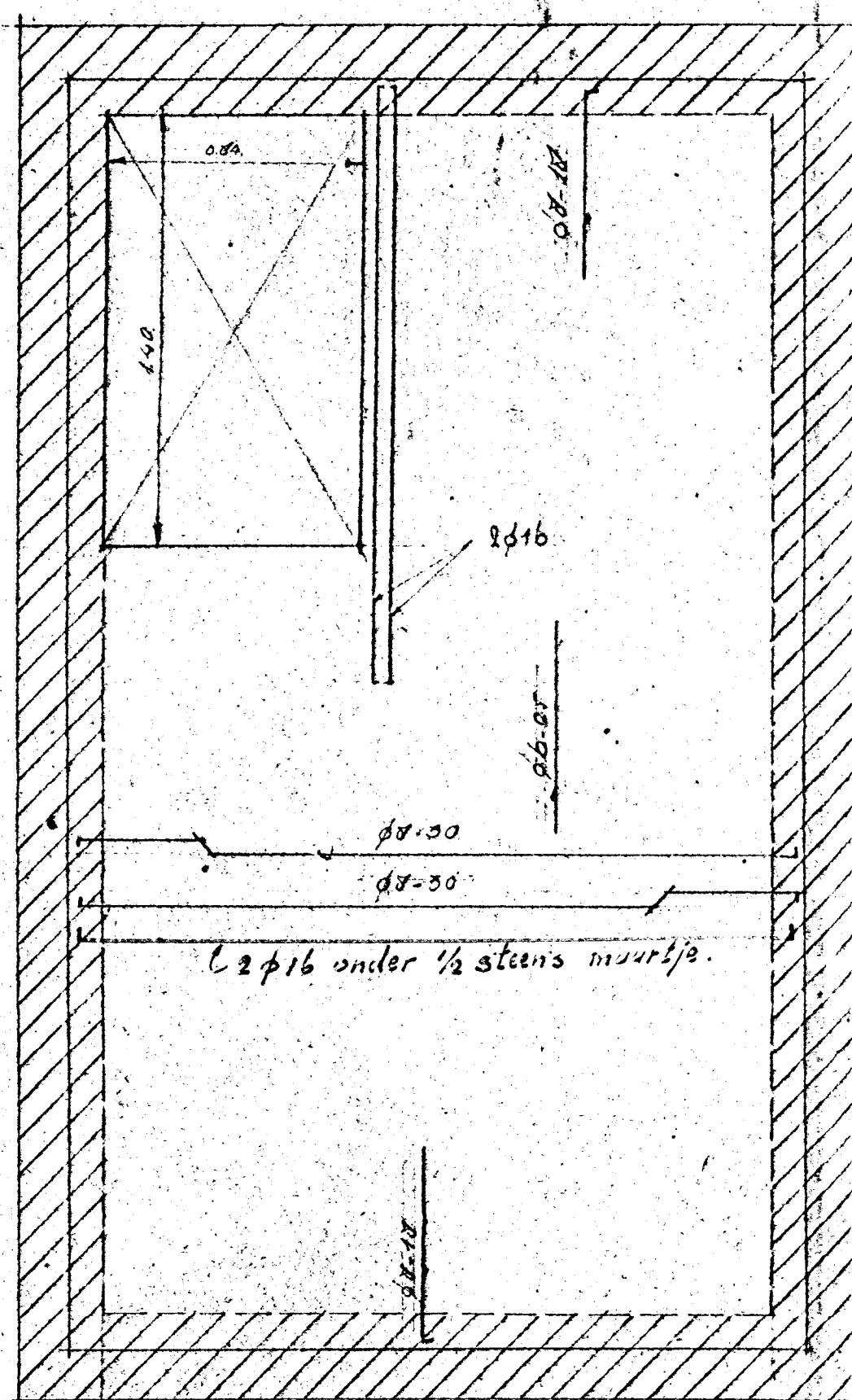
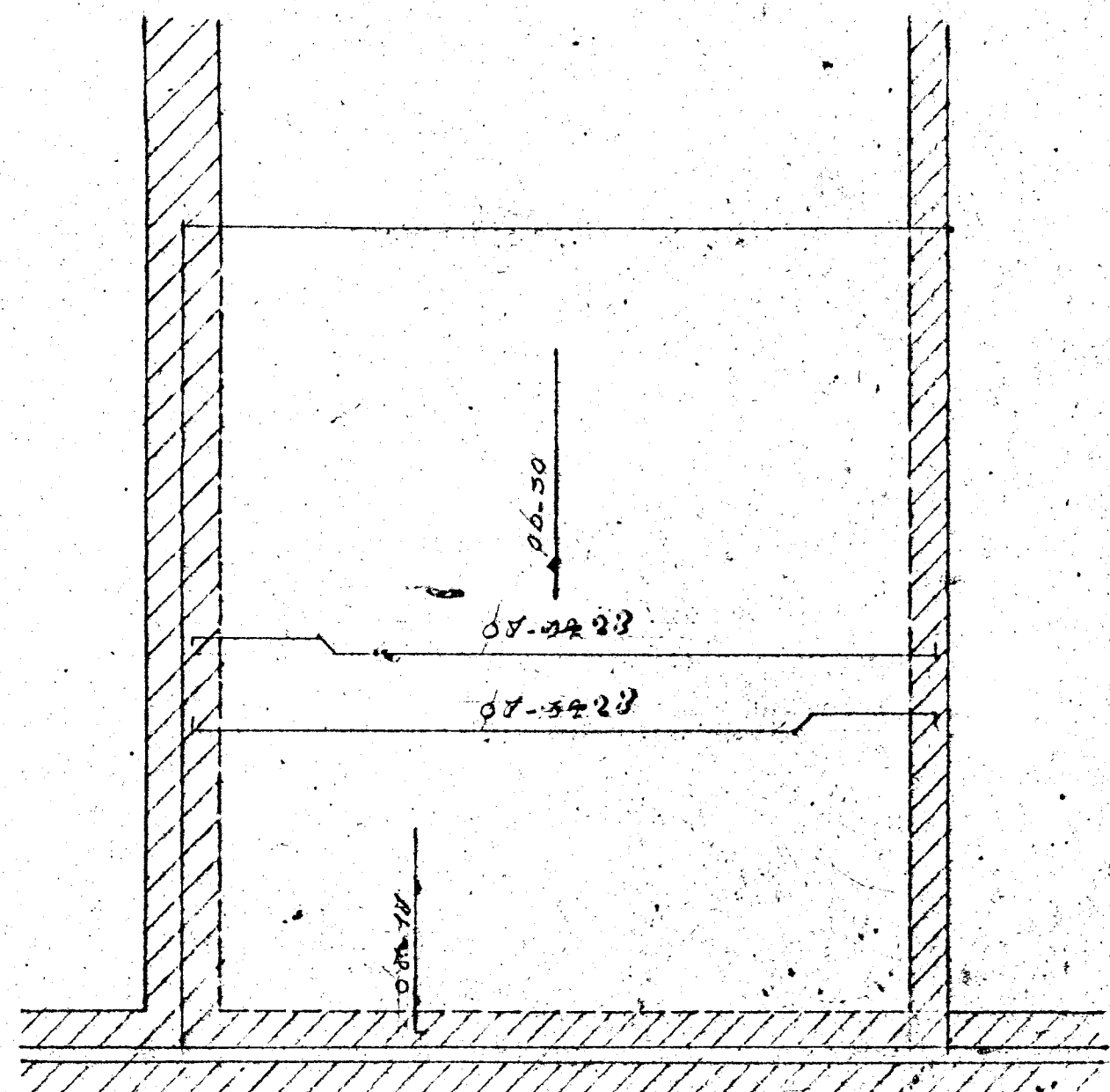


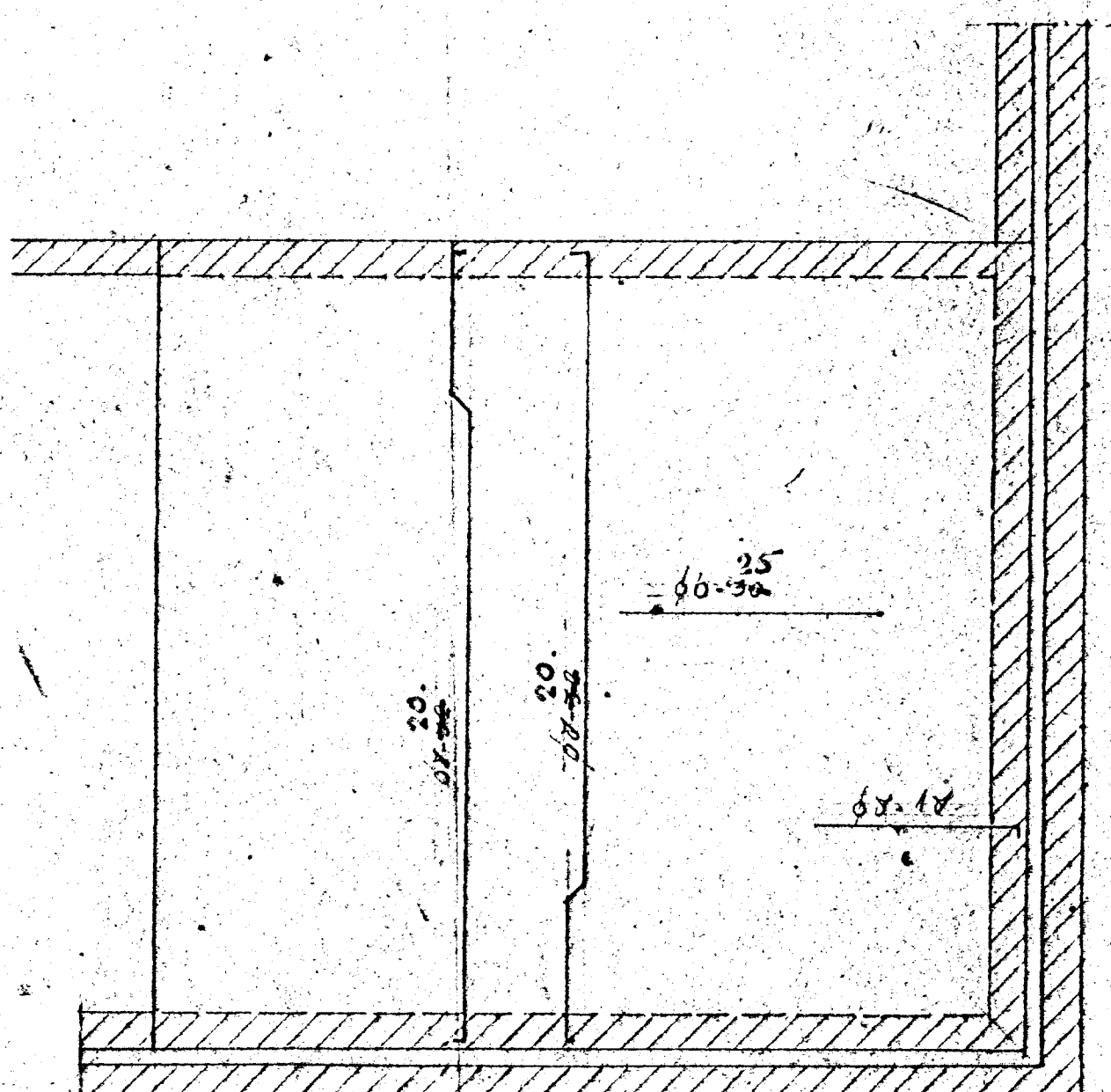
keldervloer woning Molenstr.



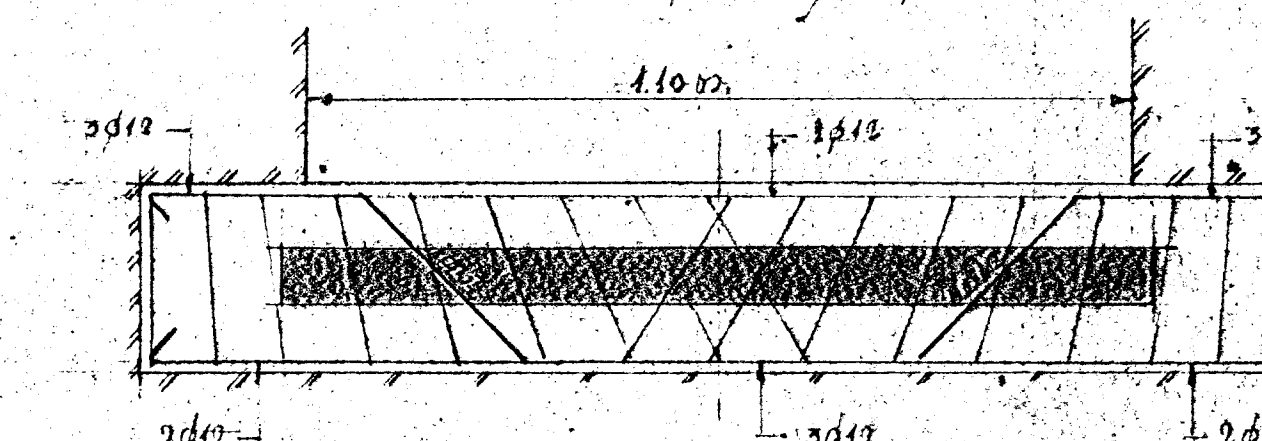
keldervloer woning Sophialaan



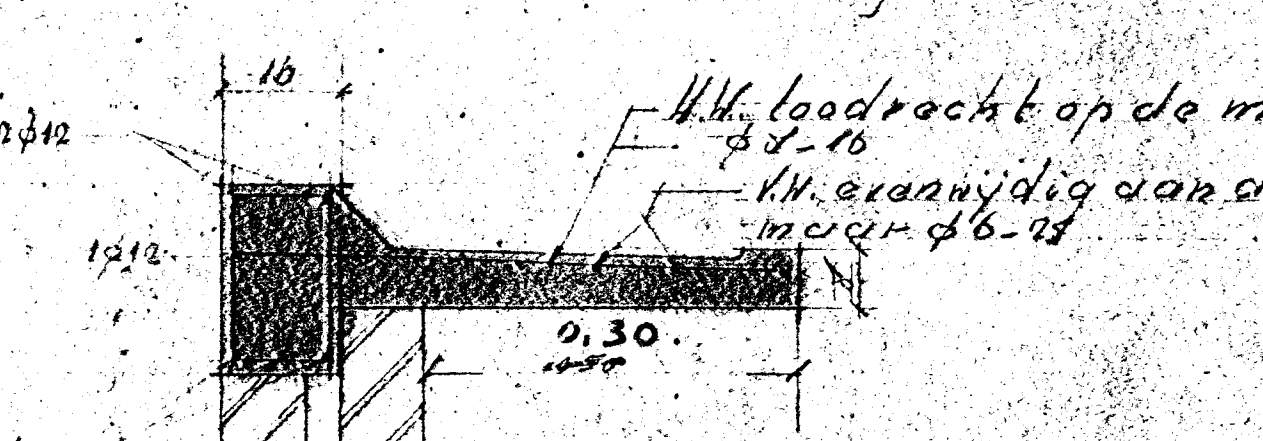
badkamer vloer woning Molenstr.



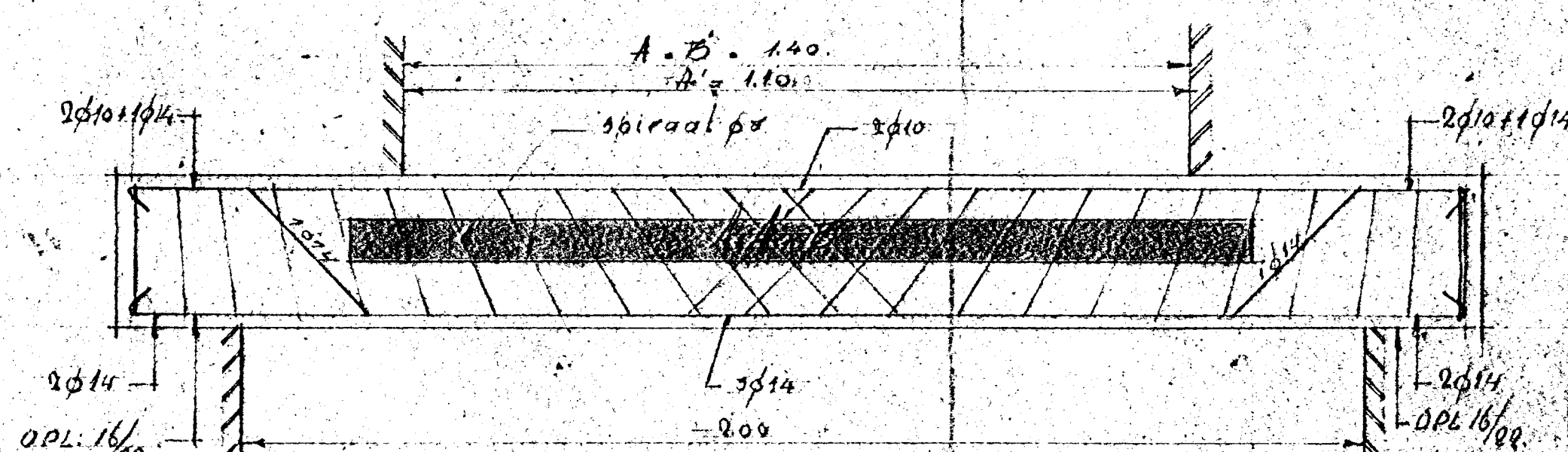
badkamer vloer woning Sophialaan



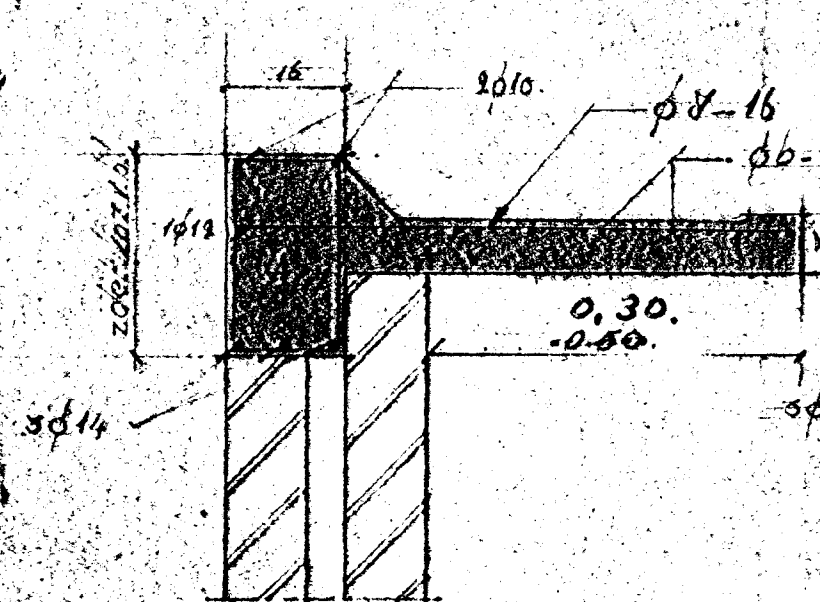
balcon Zuidgevel Molenstraat



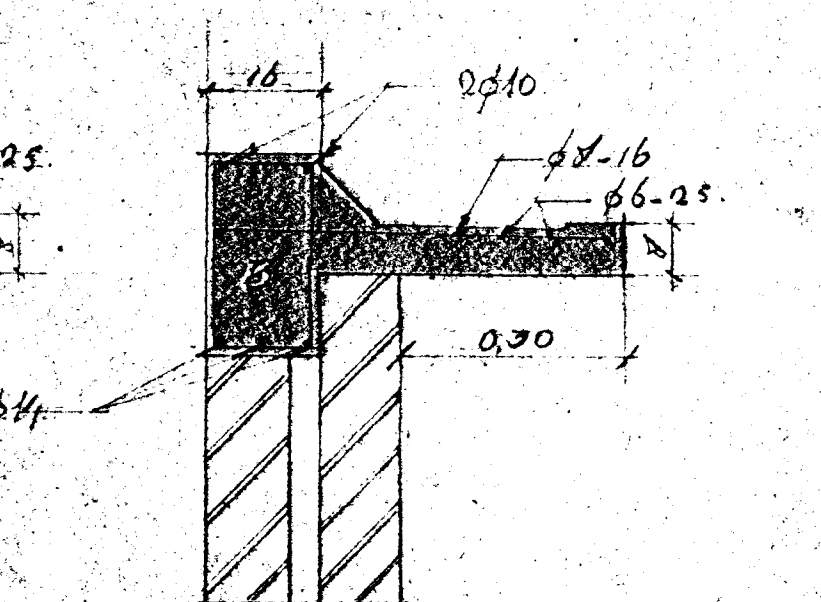
alle ramen Noordgevel Sophialaan



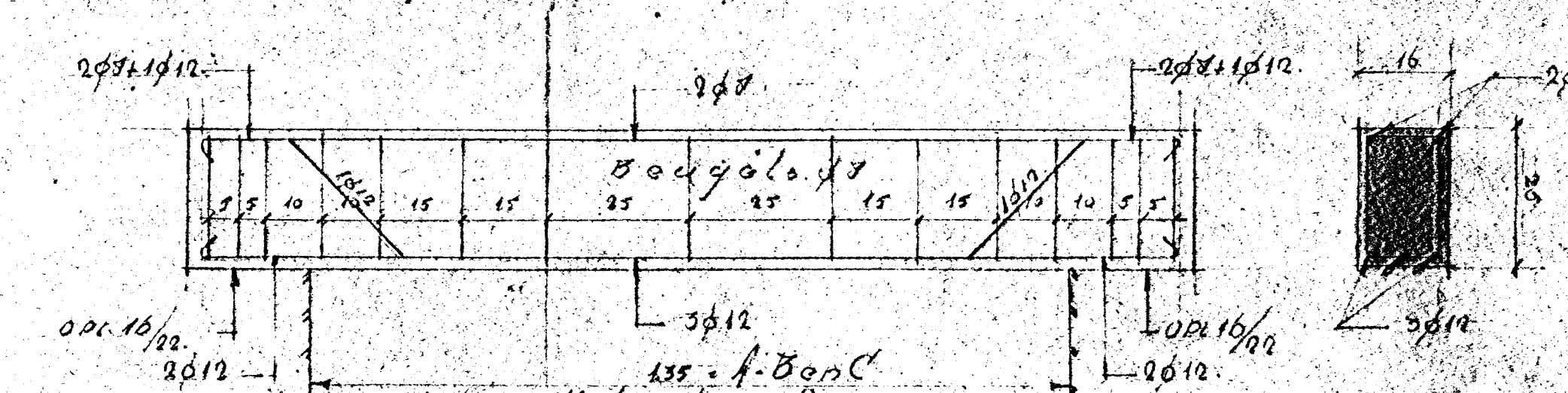
Balcons woning Molenstraat
A. balkon Vestgevel
B. balkon gevel Molenstraat



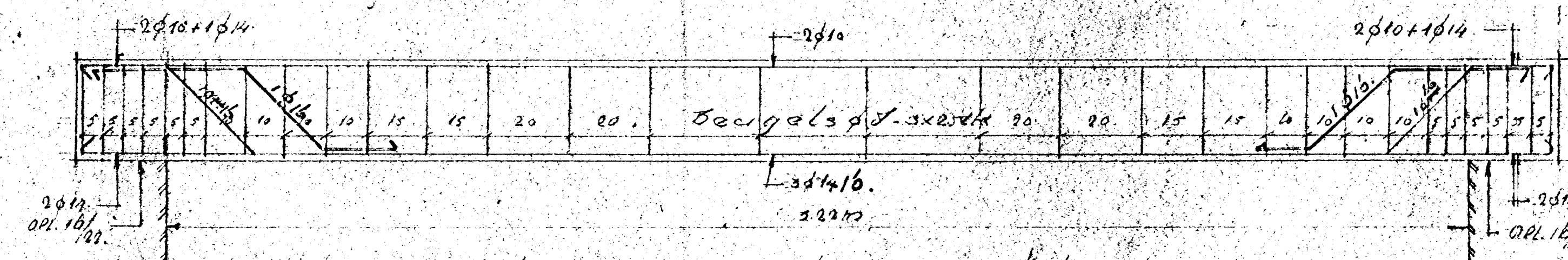
A. balken boven verdiepingramen N. gevel Molenstraat



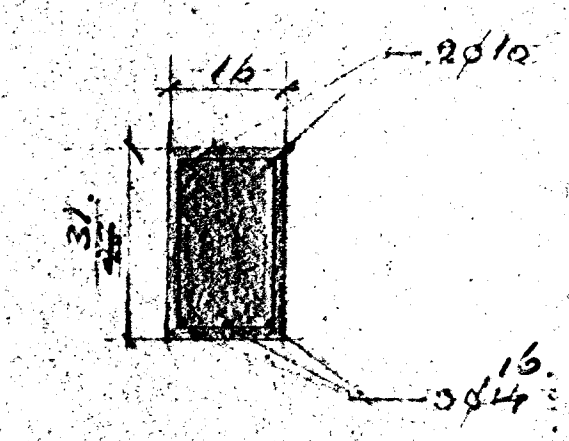
B. " " " " " " " " " " " "



C. balken boven verdiepingramen N. gevel Molenstraat
D. " " " " " " " " " " " "



balk boven winkelruimte Oostgevel woning Molenstraat
balk boven grote verdiepingruimte Zuidgevel pand Molenstraat



D. alle ramen Noordgevel Sophialaan

alle overige balken te wapenen met 3φ10 onderin, 2φ8 bovenin 1φ10 opbuigen. Beugels φ8 h.o.b. 25.

Bouwplan Winkelhuis en woningen o.d. Molenstraat en Sophialaan		
Schaal 1:20	Get. Jv. Bollen	Datum 11-10-49
Architect T.O. Slykhuys	Zwolscheweg 2' Apeldoorn tel. 2322	Blad 3
		№. 347