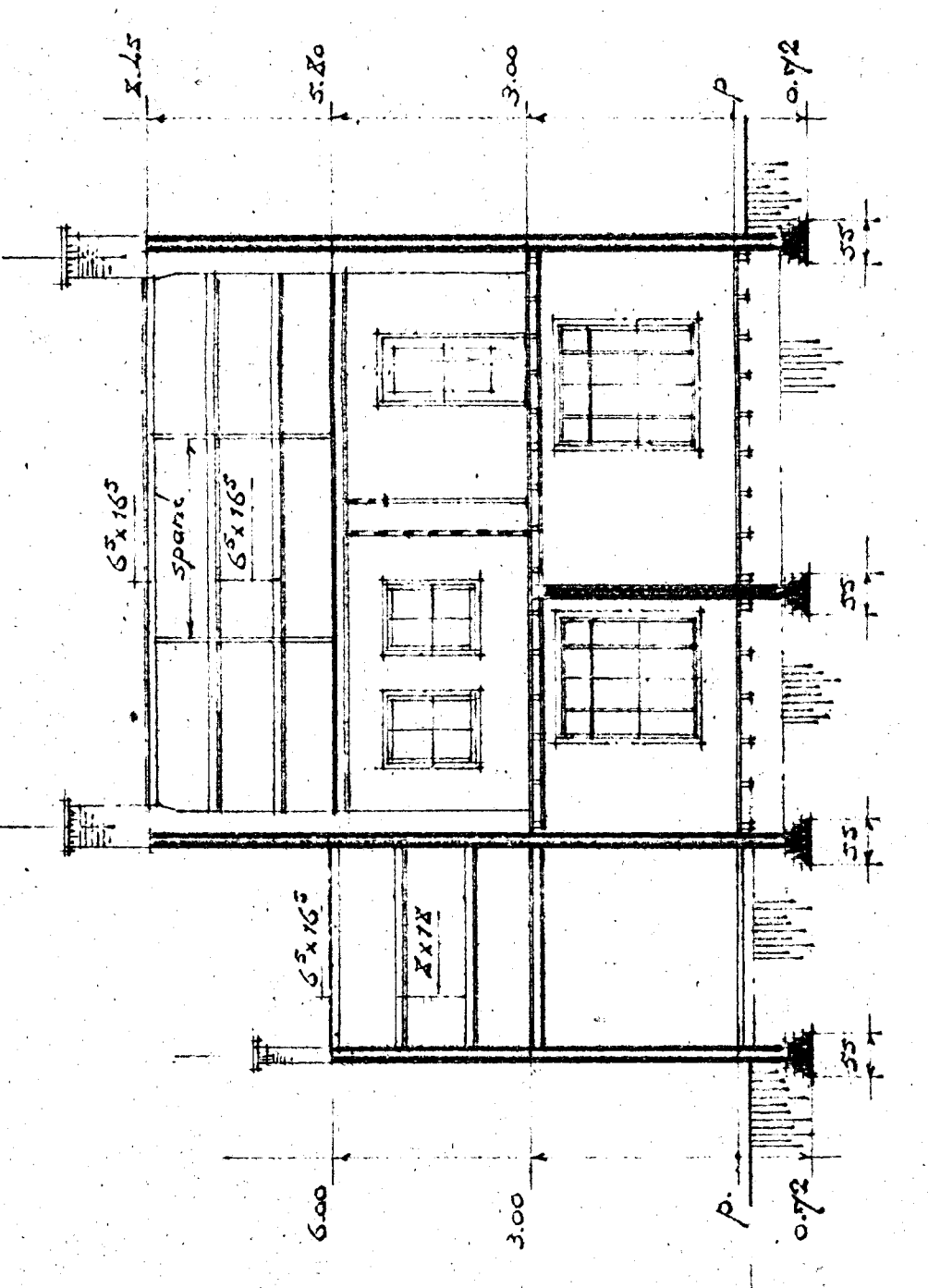
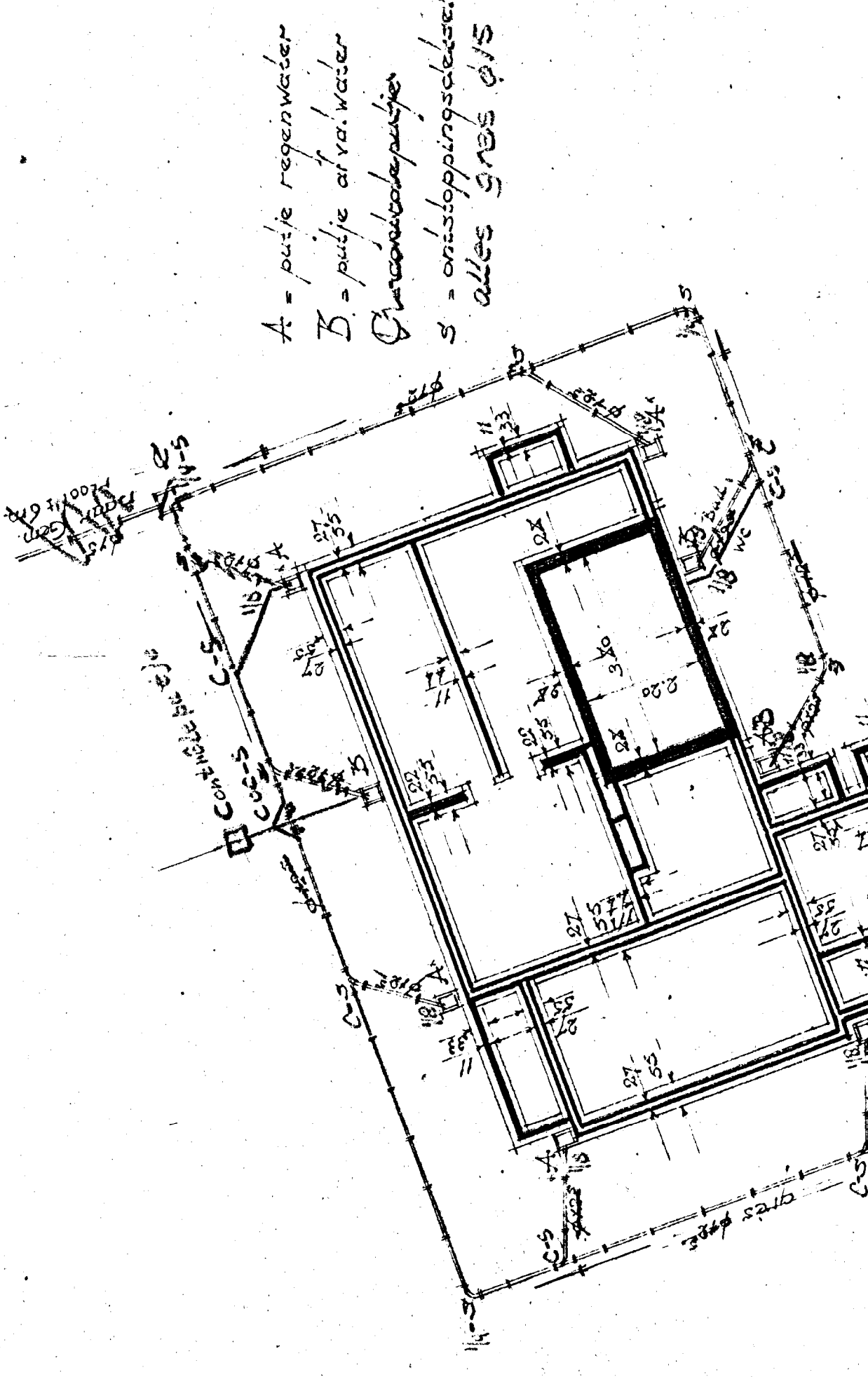


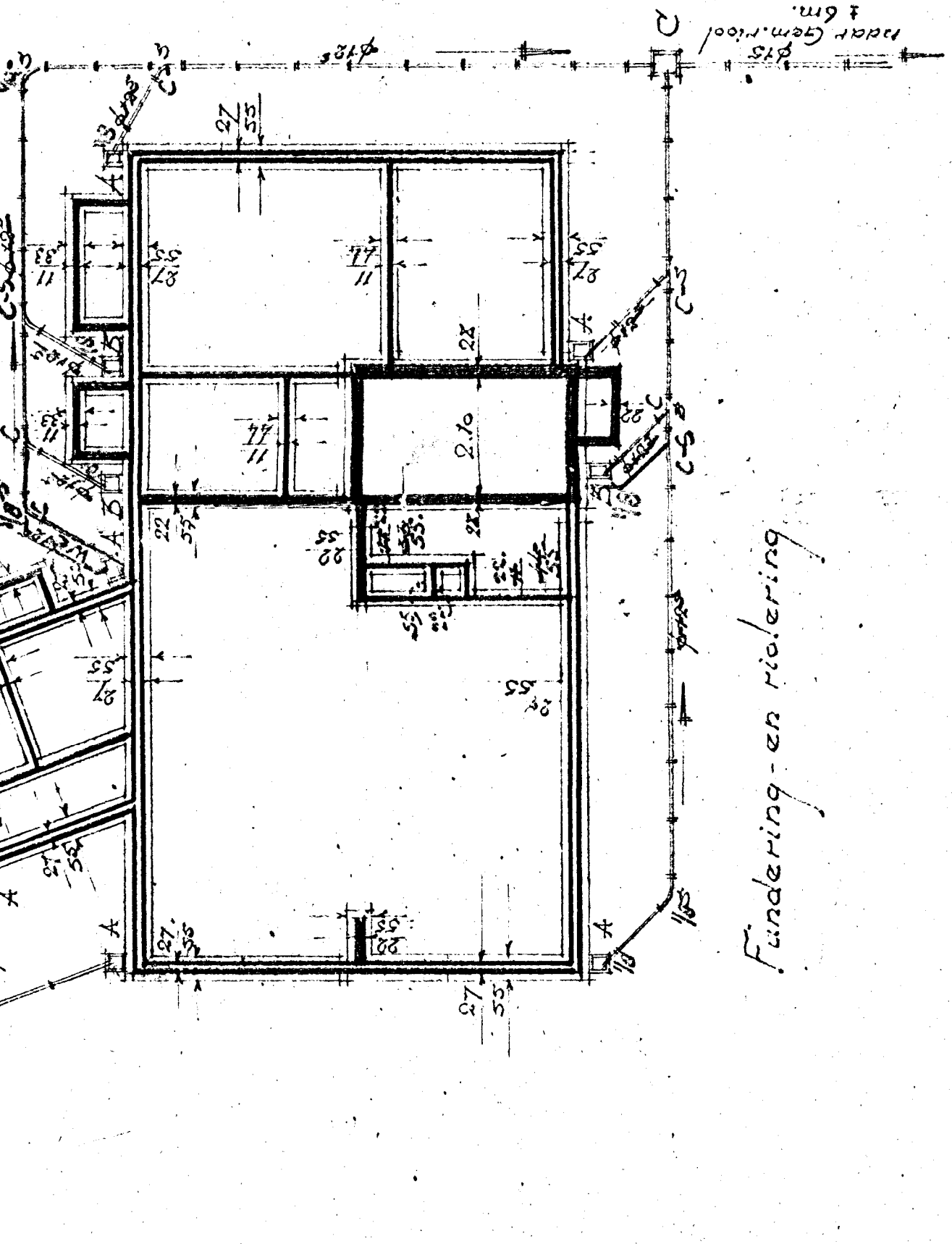
Doornede G-H



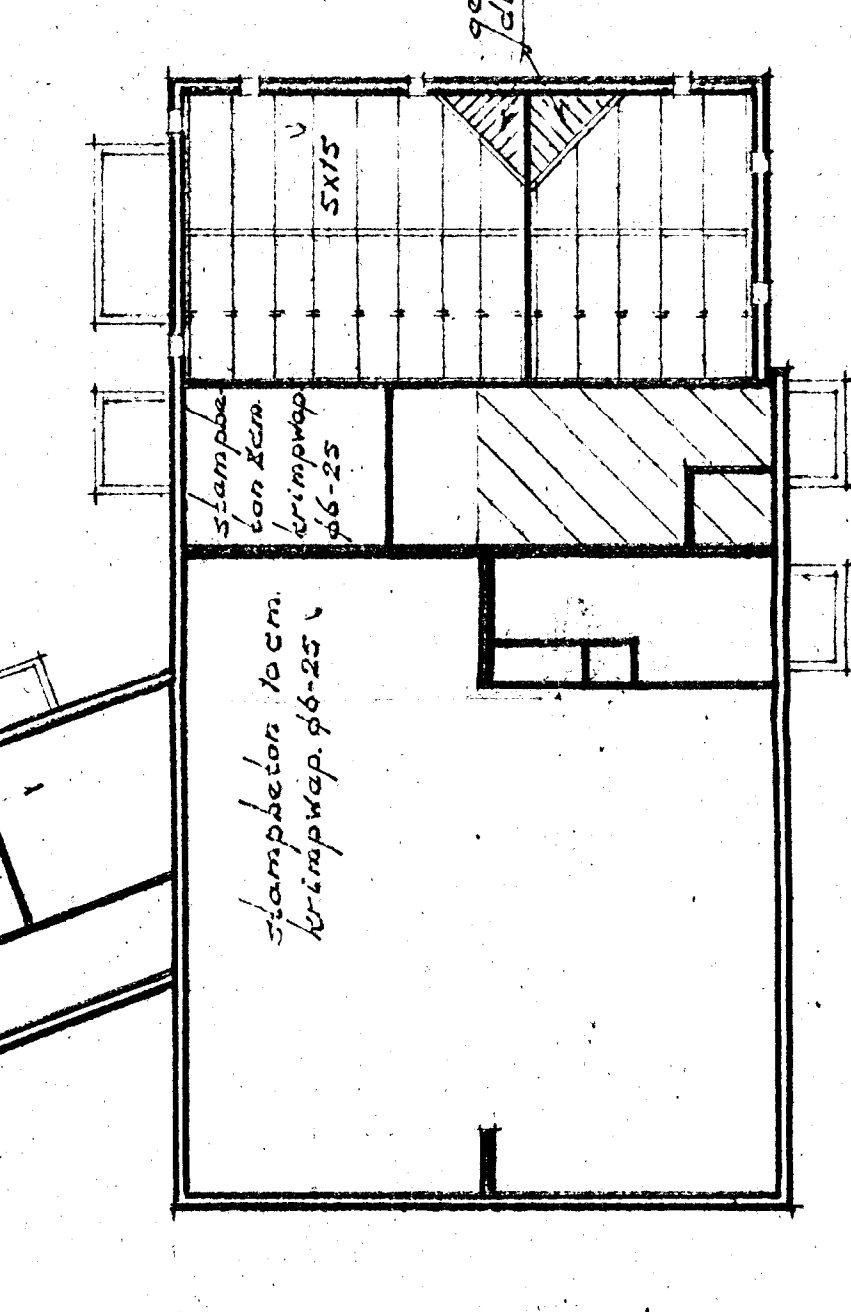
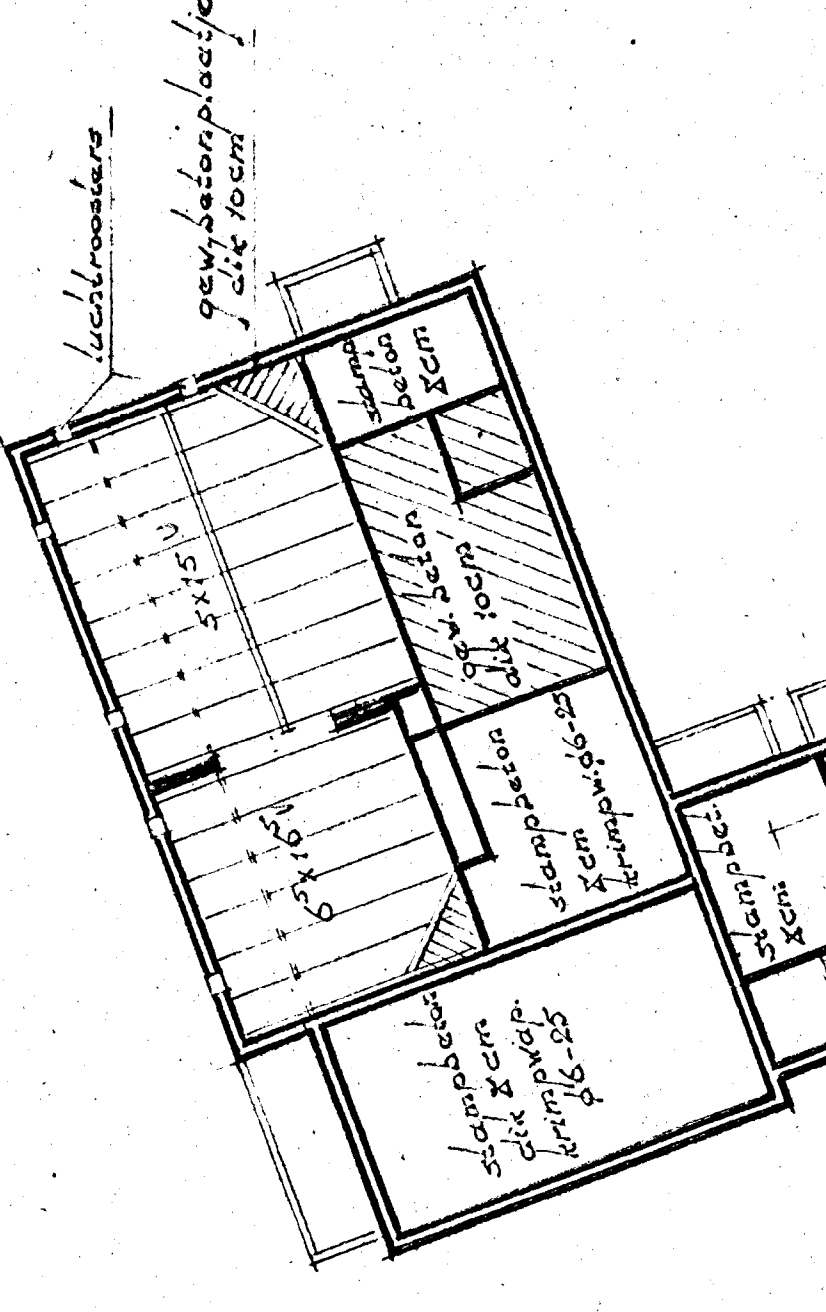
Doornede J-J



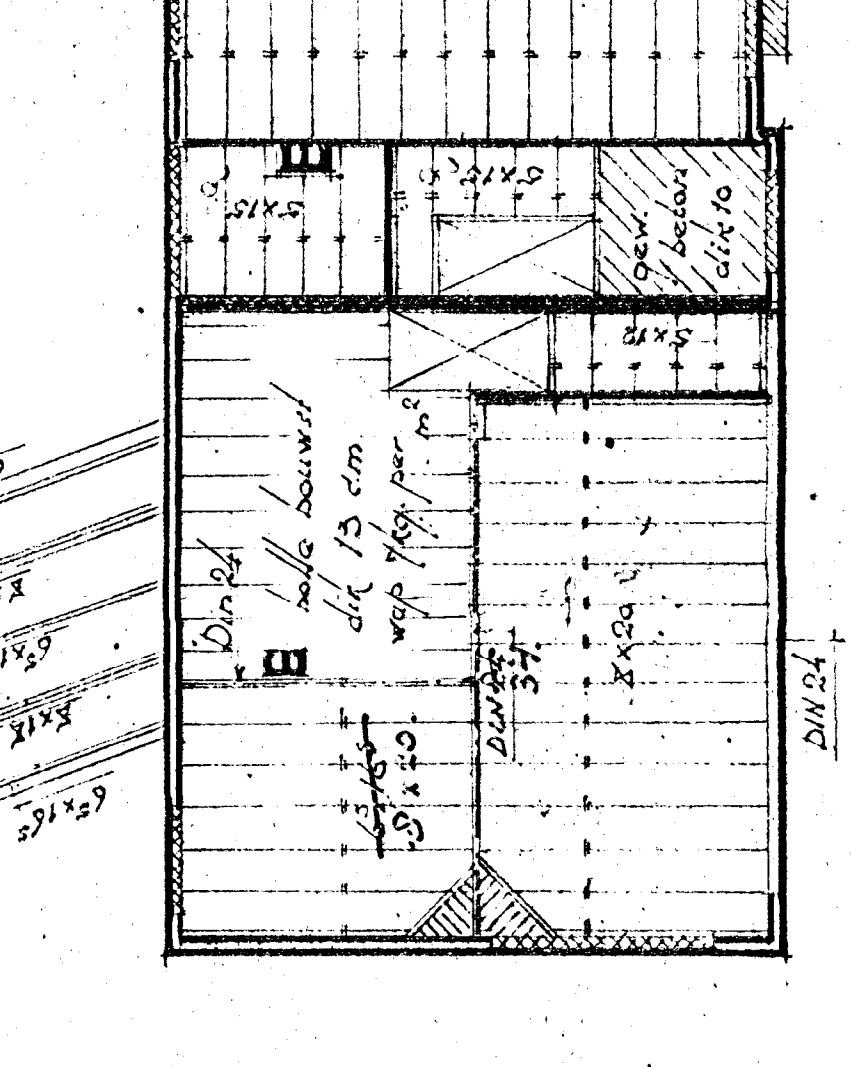
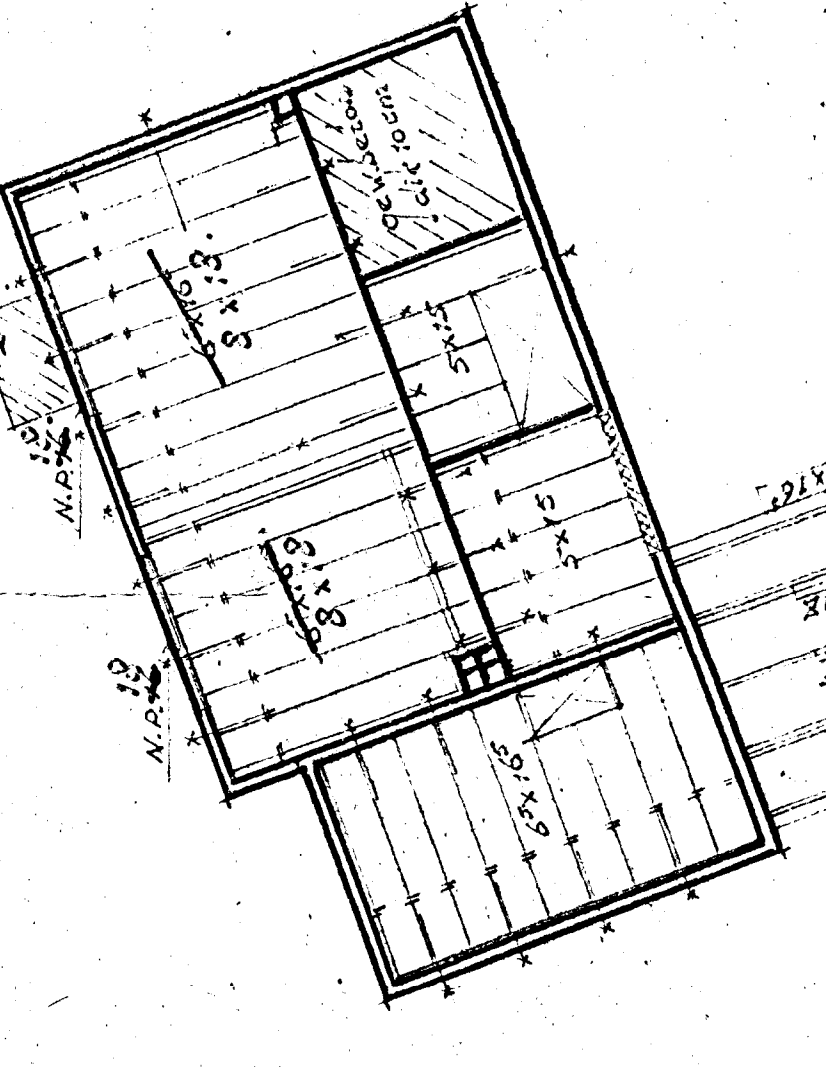
A = putje regenwater
 B = putje afvalwater
 C = ontstoppingskleef
 alles 5 cm Ø/5



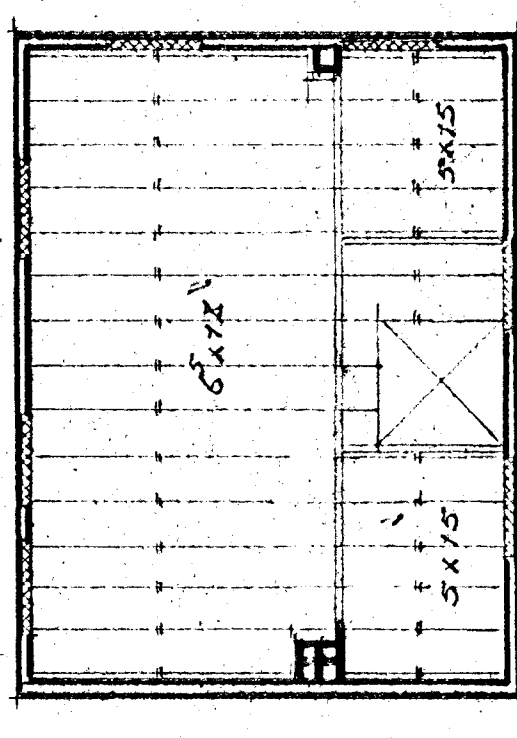
Fundering- en riolering



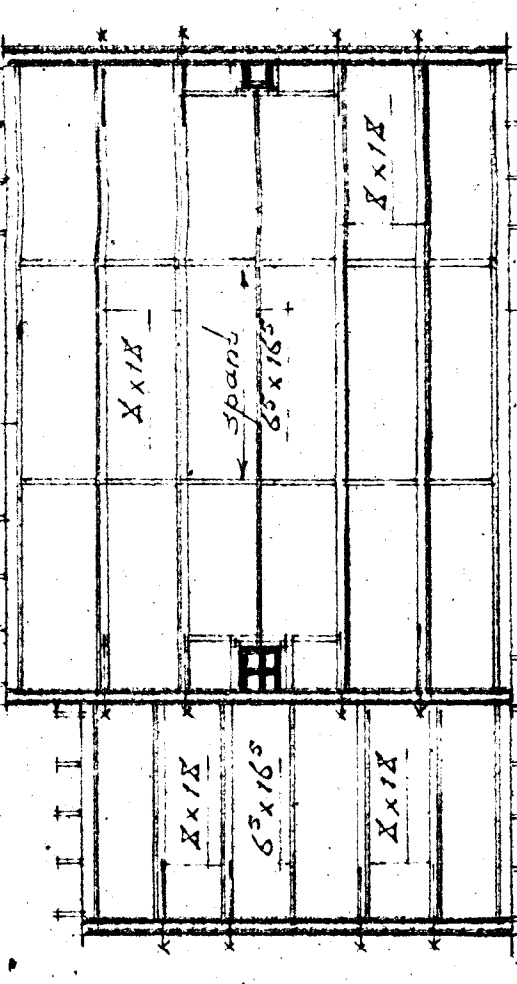
Begane grond vloeren



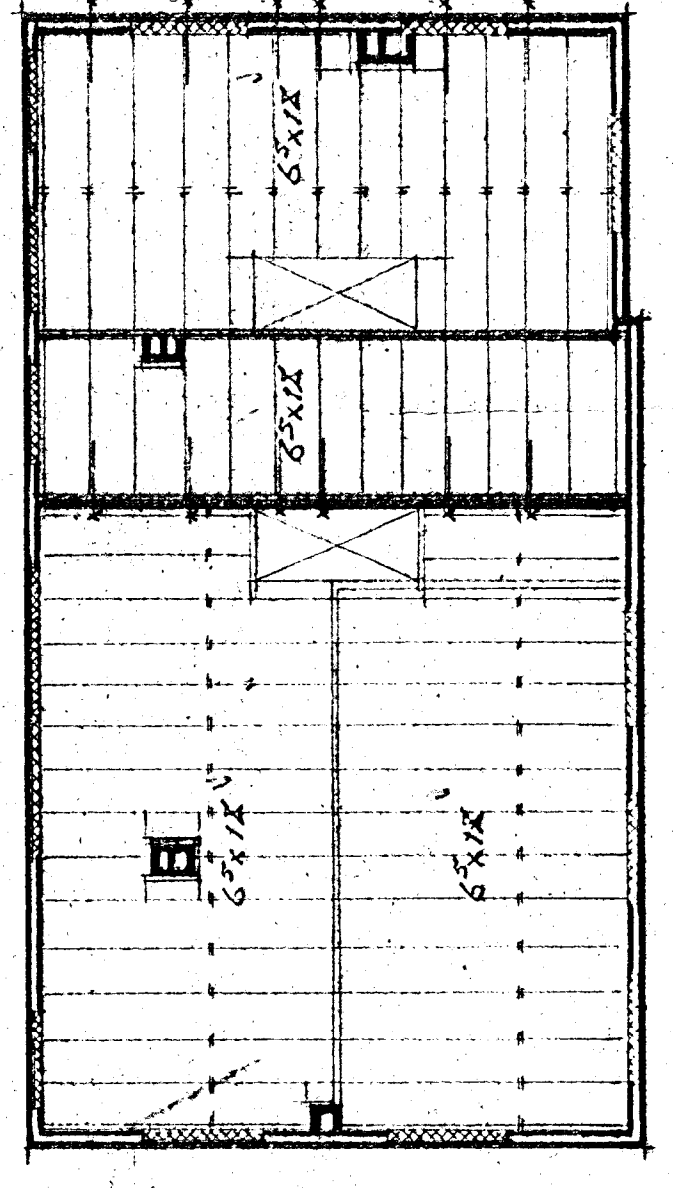
Verdieping vloeren



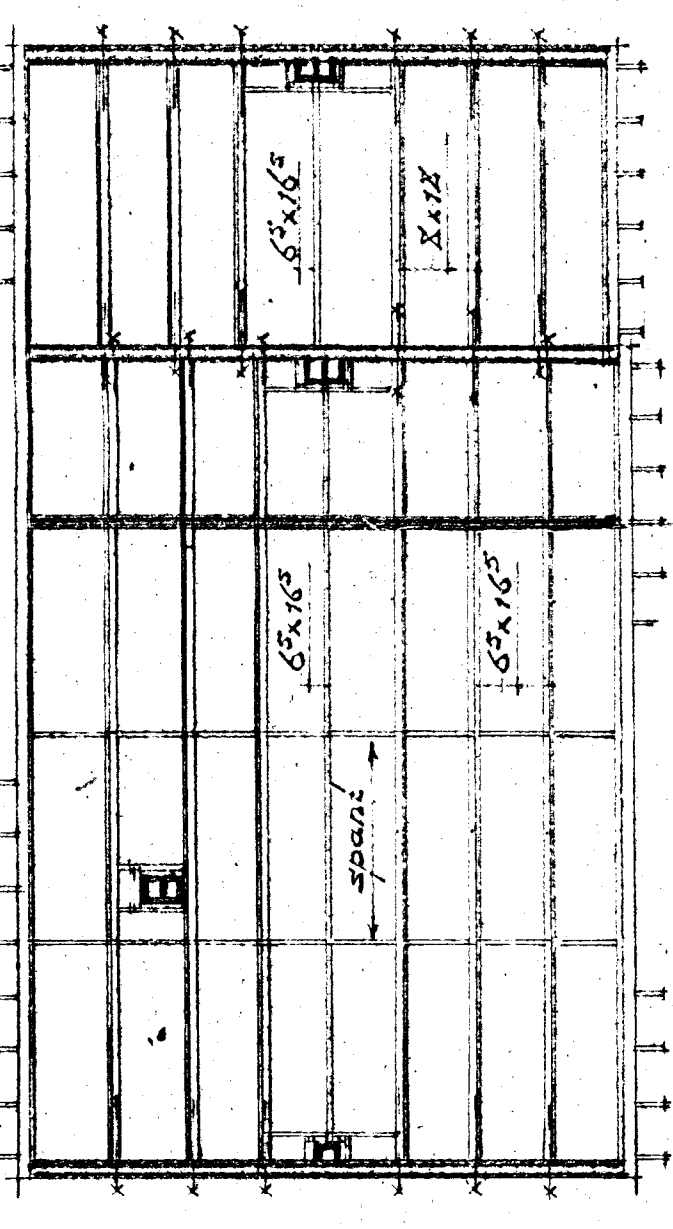
Zoldervloeren pand Sopsitaal



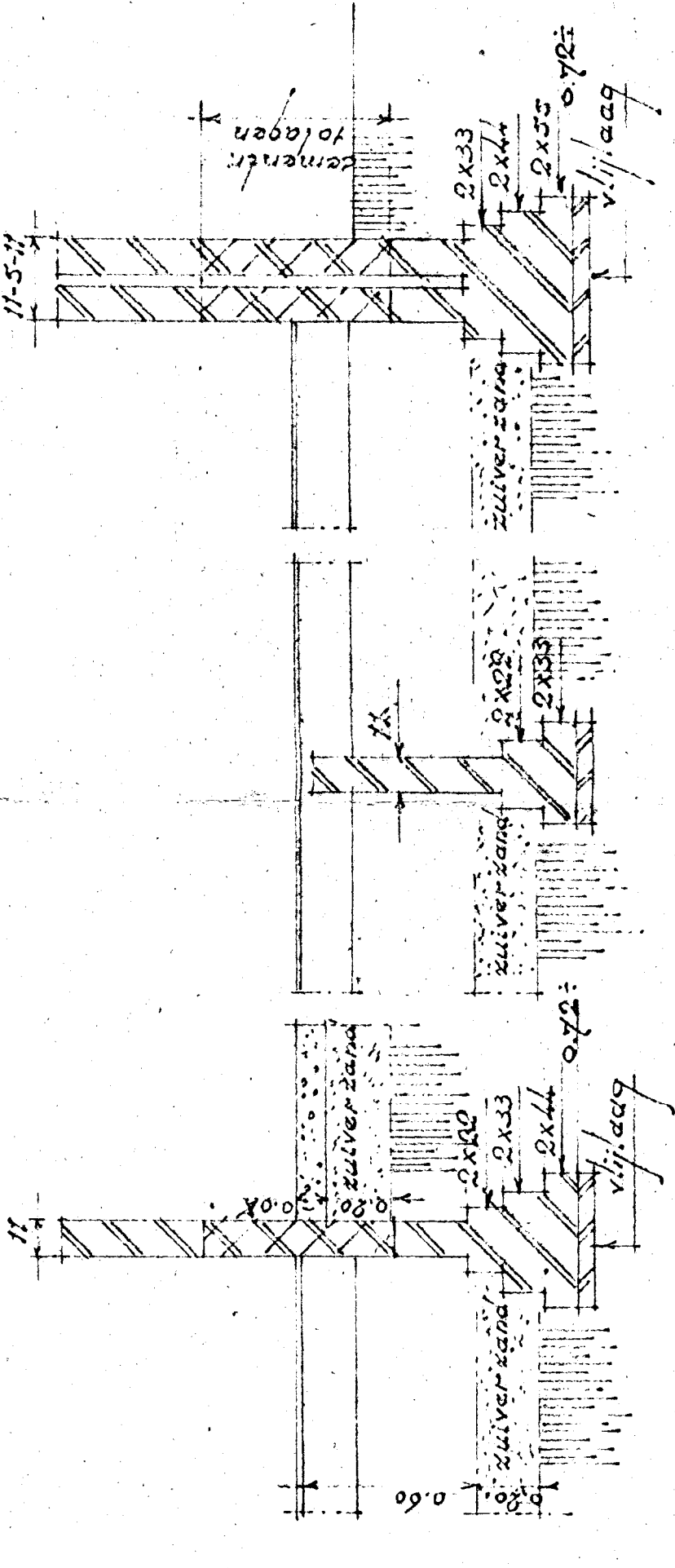
Kappelen pand Sopsitaal



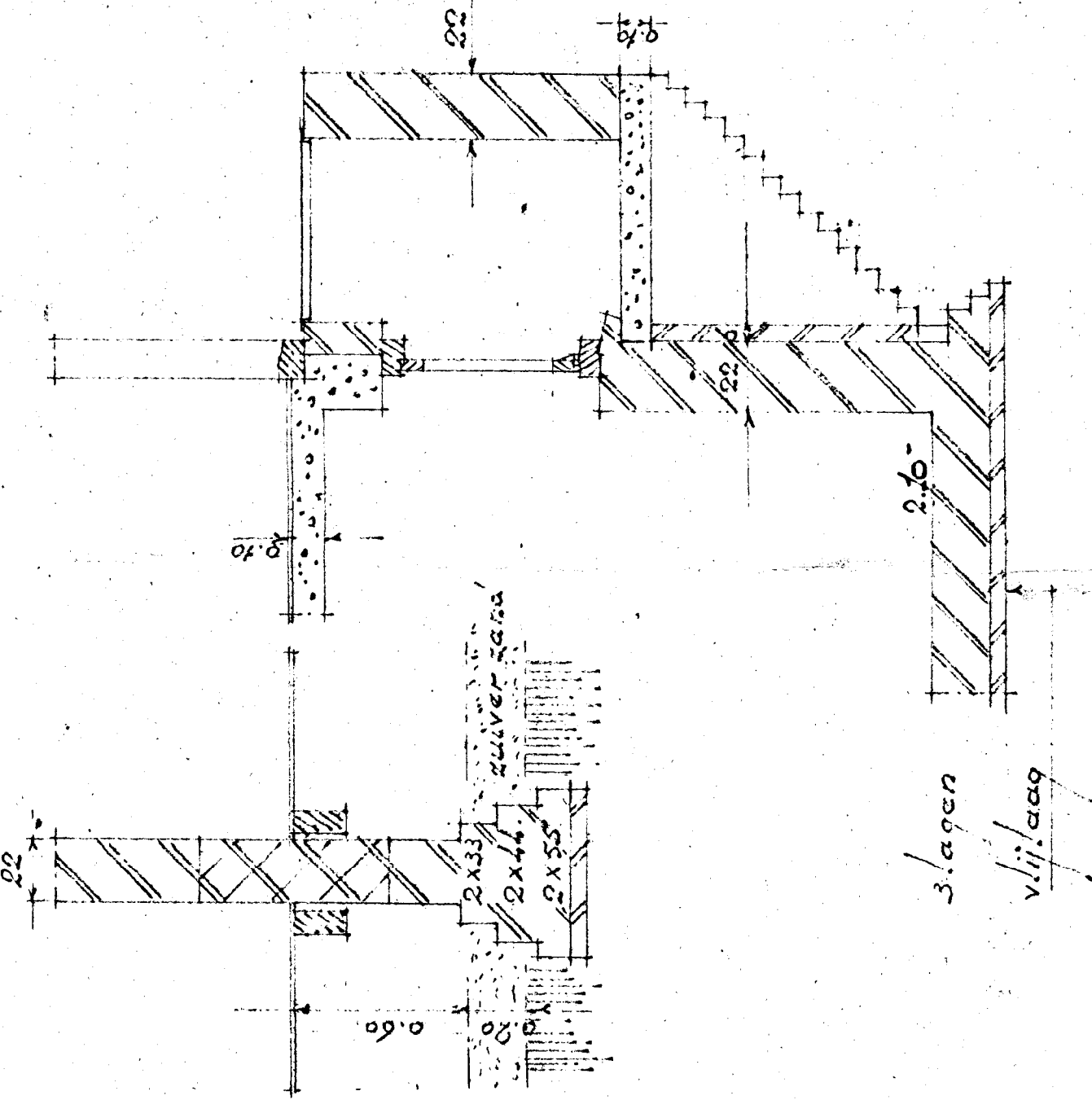
Kappelen pand Molensstraat



Kappelen pand Molensstraat



Funderingsdoorsneden



muurplaten 65x165
 nok 65x165
 slapers 65x165
 gootklossen 7 x 10
 daktessels 19 mm.

| | |
|--|-----------------|
| Bouwpjen wintertuif en woningen aan de Molensstraat en Sopsitaal | Bestek-tekening |
| Schaal. 1:200 | Datum. 30-7-29 |
| Architect. J. G. Blikhuis. | Blad. 347 |
| Zwetschweg 2, Apeldoorn, tel. 1892. | 2 |